

WHAT'S HAPPENING

Eswatini

FREE COPY

No. 6

VOLUME 26

June/Inhlaba 2026

A RETURN
TO THE
AFRICAN
FUTURE



SAT 01 — SUN 02
AUGUST
2026

TICKETS NOW AVAILABLE AT STANDARD BANK BRANCHES:

MBABANE (CORPORATE PLACE) | EZULWINI (THE GABLES)
MANZINI (OPPOSITE BHUNU MALL)
& DALA SPACES (MALANDELA'S LIFESTYLE)

TICKET TYPE	PHASE 1	PHASE 2	PHASE 3
FULL FEST PREMIUM LOUNGE	E1,980	E2,380	E2,780
FULL FESTIVAL LUJU GARDENS	E680	E780	E880
KIDS FULL FEST (6-12 YRS)	E180	E250	E280

Children aged 5 and under enter free.

Standard Bank Luju Food & Lifestyle Festival cannot guarantee the legitimacy of tickets bought from third parties.

**TICKETS ARE ALSO AVAILABLE ON UNAYO.
WHATSAPP "HI" TO 7805 6364 & FOLLOW THE PROMPTS.**

LUJUFESTIVAL.COM

unayo®



A Return to the

“A Return to the African Future” ushers us into the 8th edition of one of Southern Africa’s leading food and fashion events, the Standard Bank Luju Food & Lifestyle Festival!

In an exciting evolution inspired by the festival’s remarkable growth and impact, this year’s Luju Festival will, for the very first time, unfold across two full weekend days. Mark your calendars and prepare to #EatSwayLove from **Saturday 1st to Sunday 2nd August 2026** at House On Fire in Malkerns, Eswatini.

With the festival’s increased regional appeal and attendance, this extended format asserts the Luju Festival as a true weekend destination and vibrant catalyst for cultural tourism in the continent. In 2025 alone, Luju welcomed over 10,000 attendees from 26 countries and 47 performing acts from across the region. So, this extended full 2-day format presents an even more immersive experience for audiences traveling from different parts of Africa.

In true Luju style, the festival will unite the continent in a lavish celebration of African style, cultures, creative design and delicacies in all their sophisticated splendour. The festival’s tastefully curated programme will once again present the finest culinary demonstrations by



...a Journey to the 2026 Standard Bank Luju Food & Lifestyle Festival

CONTENTS

- ...a Journey to the 2026 Standard Bank Luju Food & Lifestyle Festival **2**
- A Return to the African Future **3**
- Sibebe Premium Lager Named Official Beer of FIFA World Cup 2026 **4**
- Winter escapes start at Buhleni Farm Chalets **5**
- Countdown to MoMo Xperience **6**
- Mid-year conference at Phumula Guesthouse **7**
- Winter mornings made easy at Vickery Coffee Shop **7**
- World Environment Day 2026: Climate Action **8**
- NKONYENI WINTER WARMTH: **9**
- Malotja is Eswatini’s ultimate wilderness sanctuary **10**
- Cyclists Ready for B2B Challenge **12**
- Redefine Your Weekend **13**
- At Mdzimba View Shisanyama **13**
- A New Walk for NHSe **15**
- Elevated Evenings at Together & Co Pool Bar **18**
- Why Biodiversity Matters for Eswatini **18**
- Mark Your Calendar! **19**
- Be part of the Mo-ment **20**

celebrity chefs, as well as connoisseur-led premium wine and whiskey showcases, a world-class regional fashion runway show and a vibrant lineup of Pan-African music.

Luju’s unmistakable sense of elegance and artistic prowess will take centre stage as the festival continues to evolve as a vibrant platform where culture, entrepreneurship, creativity and community intersect.

SECURE YOUR PASS TO LUJU 2026

With anticipation already building, festivalgoers are encouraged to secure their tickets early. Tickets are available online at www.lujufestival.com, while Eswatini residents can conveniently purchase tickets through the **Standard Bank UN-AYO Ticketing Service** by sending “Hi” to 7805 6364 on WhatsApp and following the prompts.

GET YOUR LUJU TICKETS AT LOCAL OUTLETS

Tickets are also available at local Standard Bank branches at the Corporate Place in Mbabane, The Gables in Ezulwini and the Manzini branch, as well as at Dala Spaces at Mandela’s Lifestyle. While online ticket sales have already moved to Phase 1 pricing, Early Bird tickets remain available at these local outlets for a limited time and while stocks last. Tickets can be purchased using cash or debit cards and will be issued digitally via email or mobile phone, complete with a unique QR code for festival entry. All tickets provide access to the full two-day festival experience.



A CELEBRATION ROOTED IN HERITAGE

At the centre of Luju 2026 is a call to reawaken Africa’s rich cultural foundations.

The festival’s ethos, “A Return to the African Future” is a bold declaration of Africa’s unique creative legacy. It summons us all to reclaim our heritage, reimagine our African identity and reconnect the wisdom, resilience and ingenuity of those who came before us.

Across every corner of the festival, this philosophy comes to life through carefully curated experiences that honour Africa’s authenticity and showcase its pioneering spirit.



WHAT'S HAPPENING Eswatini

- Up to 15 000 publications each month
- Monthly updated information and maps
- Distributed across the country
- Discounted rates on contracts

EDITOR: Sanelisiwe Ndzinisa
DESIGNER: Wandile Dlamini

email: whatshappening@times.co.sz
Cell: +268 7960 3910

African Future



MORE THAN A FESTIVAL

Luju has earned its reputation as a premier lifestyle event by delivering an experience that extends far beyond food and fashion.

This year, festivalgoers will have even more to explore across Luju's distinct experiential festival zones called 'Hives'. These include the **Heritage Food Garden, Luju Mainstage, Mastercard Stage, Premium Lounge, Cocktail Lounge, Fashion Café and Beauty World, Beer Garden, Buzz Amphitheatre, and The Beehive**. Each space offers its own unique atmosphere, creating a dynamic festival journey filled with discovery, entertainment and cultural expression.

Festivalgoers can also look forward to celebrity chef demonstrations, premium wine and whisky experiences, curated culinary activations, family-friendly entertainment, live music performances and unforgettable cultural experiences set against the magical backdrop of House On Fire.

As always, the festival celebrates the sophistication, elegance and diversity of African cultures while creating opportunities for entrepreneurs, artists and small businesses to connect with regional audiences.

It is a place where creativity thrives, cultures meet and memories are made.

THE COUNTDOWN BEGINS

Keep up with all the latest Luju Buzz by visiting www.lujufestival.com and follow the Standard Bank Luju Food & Lifestyle Festival on Facebook, @luju_festival on Instagram and @lujufestival on X. More information on the festival is also available on lujufestival.com. Come ready to #EatSwayLove!

THE LUJU CULINARY EXPERIENCE: EXPLORING NGUNI FOODWAYS

This year's culinary theme, **Nguni Foodways**, takes festivalgoers on a sensory journey through the traditions, knowledge systems and food cultures that have sustained Nguni communities for generations.

Food has always been more than nourishment. It has connected people to the land, strengthened communities and preserved cultural memory. At Luju 2026, these stories will echo through African-inspired culinary experiences, live demonstrations and conversations that bridge ancestral wisdom with contemporary innovation.

Central to this narrative is the Nguni cow which stands as a symbol of sustenance, spirituality, craftsmanship and community. From milk and meat to soil enrichment and ceremonial significance, its role extends far beyond the dinner table.

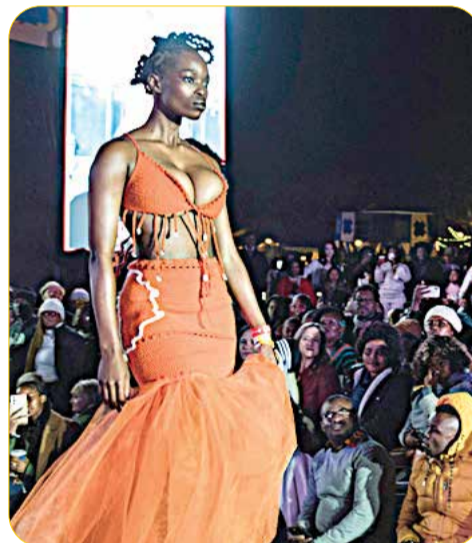


Expect a rich exploration of indigenous ingredients, smoked meats, wild greens, fermented foods, sorghum-based traditions and slow-cooked dishes that reflect generations of culinary knowledge.

The annual **Farm-to-Fork Cook-Off** will compliment this theme, pairing chefs and farmers to for the creation of innovative dishes inspired by indigenous crops, forgotten grains, Nguni beef and dairy traditions.

Additionally, the **Food Indaba** will gather culinary leaders, producers and food enthusiasts around the metaphorical Ancestral Table to discuss sustainability, identity and the future of African cuisine.

Together, these experiences transform food into storytelling, memory and celebration.



KWASUKASUKELA: FASHION AS A PORTAL TO STORYTELLING

If food tells the story of where we come from, fashion reveals how we carry those stories forward.

The 2026 Luju Fashion theme, **Kwasukasukela** (the siSwati word for 'Once Upon a Time'), draws inspiration from Africa's rich oral traditions and the timeless stories shared around the fire.

For generations, the phrase "Kwasukasukela" has signalled the beginning of a journey into imagination, wisdom and cultural memory. At Luju, it becomes an invitation for festivalgoers to express their own stories through fashion.



Sibebe Premium Lager Named Official Beer of FIFA World Cup 2026



FROM the heart of the Kingdom of Eswatini to the biggest stage in world football, a proud national moment has been sealed.

Sibebe Premium Lager, proudly brewed by Eswatini Beverages, has officially been named the Official Beer Sponsor of the FIFA World Cup 2026, placing Eswatini firmly on the global sporting and lifestyle map.

This landmark partnership is more than just a sponsorship—it is a powerful celebration of national pride, culture, and the global spirit of football. It signals a moment where Eswatini steps confidently into the world spotlight, showcasing what Emaswati are made of: resilience, pride, and unity.

The official announcement was made at a vibrant media launch attended by key partners, media representatives, football stakeholders, and brand collaborators. The event celebrated a shared vision rooted in passion, connection, and the role of beer and sport in bringing people together through moments of social celebration.

Speaking through the launch, the brand emphasized that this partnership represents more than football—it represents community, identity, and shared experience. As the world prepares for the FIFA World Cup 2026, Sibebe Premium Lager is positioning itself at the centre of fan culture, ready to unite supporters across Eswatini and beyond.

From match-day gatherings to national celebrations, the brand is set to create unforgettable experiences that will accompany fans throughout the tournament journey.

As anticipation builds toward the global football spectacle, one message stands strong: Football. National Pride. Celebration. More Cheers Ahead.

Sibebe Premium Lager is not just part of the World Cup; it is taking Eswatini with it.



Winter escapes start at Buhleni Farm Chalets

As temperatures drop across Eswatini, there is no better place to enjoy the beauty of winter than Buhleni Farm Chalets in the heart of the Ezulwini Valley.

Surrounded by forests, orchards and tranquil gardens, Buhleni Farm offers visitors the perfect opportunity to slow down, reconnect with nature and create memorable moments with family and friends. Nestled away from the hustle and bustle, the farm combines peace, comfort and outdoor adventure in one unique destination.

Whether you're planning a romantic escape, a family holiday, a group retreat or simply a peaceful weekend away, Buhleni Farm Chalets offers the perfect balance of comfort and nature. This winter, trade the city noise for birdsong, warm fires and unforgettable experiences.

WHAT TO DO THIS WINTER AT BUHLENI FARM

ENJOY A TRADITIONAL BRAAI

Nothing says winter like gathering around a warm fire with family and friends. Each chalet features its own braai area, making it the ideal setting for relaxed evenings under the stars.

TAKE NATURE WALKS

Explore beautiful walking trails through forests, orchards and bushveld while enjoying crisp winter air and breathtaking scenery.

WILDLIFE AND BIRD WATCHING

Nature lovers can spot a variety of bird species, monkeys and other wildlife that call the farm home.

RELAX AND RECHARGE

Escape the noise of everyday life and enjoy the peace and quiet of a secluded forest retreat, perfect for reading, reflection or simply unwinding.

FAMILY GETAWAYS

The spacious chalets and open grounds provide the ideal environment for families to spend quality time together.

CAMPING ADVENTURES

For outdoor enthusiasts, the campsite offers a unique opportunity to experience winter nights in nature while enjoying modern conveniences.

WINTER PHOTOGRAPHY

Capture stunning winter landscapes, misty mornings and golden sunsets that make Buhleni Farm a photographer's dream.



www.buhlenifarm.co.sz GPS - 26 26' 17.22" S 31 11' 26.86" E
Guided country tours available!

BUHLENI Farm CHALETS

Excellent, fully equipped, self catering accommodation and campgrounds in the Ezulwini Valley
Entrance across the road from The Gables shopping and restaurant complex

Long stay & corporate rates available upon request

E: info@buhlenifarm.co.sz T: +268 2416 3505/8 C: +268 7602 4712/1

eswatini MOBILE 5G

WIN 1 OF 9 E10 000 CASH PRIZES!

Join Us in Celebrating 9 Years of Service with Your Affordable Network. Load E100 + airtime or No Frills 100+ in May, June & July to stand a chance to win!

SIYABANGENA MORE!

Load E100 or More in May, June & July! Load More to Increase Your Chances.

The draw will take place on **August 1st 2026**

Grow with MoMo

Countdown to MoMo Xperience

...be part of the Mo-moment



As excitement sweeps across the entertainment scene, the MoMo Xperience 3rd Edition is fast emerging as one of Eswatini's biggest and most anticipated lifestyle events of 2026. The event continues to position itself as more than just a music festival; it has evolved into a major cultural and tourism attraction that celebrates creativity, youth culture, entertainment and digital lifestyle innovation in Eswatini. Set for 27 June 2026 at Malkerns Country Club, starting at 11am till late; this year the festival promises an unforgettable fusion of music, fashion, culture, food, lifestyle and nonstop entertainment.

ARTISTS REVEALED. MOMO WORLD AWAITS. ARE YOU IN?

With a fiery lineup featuring some of Southern Africa's most celebrated performers alongside Eswatini's top local talent, music and lifestyle enthusiasts can look forward to electrifying performances across Amapiano, Soul,

MoMo Xperience has evolved beyond music; it is now a cultural and tourism attraction celebrating creativity, youth culture, entertainment and digital lifestyle innovation in Eswatini.

Afro-pop, and house music.

The star-studded lineup includes: The Soil, Loyiso, Sam Deep, Bholoja, Sanchiezy, Gifted Kosie, DJ Mbo, Tibza, Siphiso Ndoni, Mco Jamrock, Lady Zee, and many more artists set to light up the stage, delivering an experience that caters to diverse audiences and music tastes.

BIG STAGE. BIG ENERGY. BIGGER XPERIENCE

This year's Xperience promises a bigger and more immersive experience, combining live music with premium lifestyle experiences, interactive brand activations, food stalls, networking spaces and vibrant social energy that has become synonymous with the MoMo Xperience brand.

TICKET PRICES HAVE BEEN SET AS FOLLOWS:

- VIP – E550
- General – E250
- Kids (12 and below) – E50

Festival-goers are encouraged to secure their tickets early through Smart Ticket at www.smartticket.co.za to avoid disappointment. Get your tickets, gather your crew, and prepare for an entertainment experience like no other. Whether you are coming for the music, the atmosphere, or the unforgettable memories. get your dancing shoes ready. MoMo World awaits.



Mid-year conference at Phumula Guesthouse

As companies and organisations prepare for mid-year reviews, strategy sessions, workshops, and team engagements, Phumula Guesthouse is offering the perfect venue for productive and professional gatherings.

The guesthouse provides a comfortable and well-organised conference facility available for hire at only E1500 per day, making it an affordable option for businesses, corporates, churches, government departments, and community organisations looking to host successful meetings in a relaxed environment.

The conference package includes:

- Projector
- PA System
- Water and mints for delegates

Whether you are planning a management review, staff training, business presentation, or stakeholder meeting, Phumula Guesthouse offers a quiet and professional atmosphere designed to support meaningful discussions and productive outcomes.



Please note that morning tea, lunch, and afternoon tea are not included in the package price

and can be arranged separately. Businesses and organisations are encouraged



to secure their bookings early as demand for conference venues continues to grow during the mid-year planning season.

For bookings and enquiries, contact Phumula Guesthouse on +268 78306775.

Winter mornings made easy at Vickery Coffee Shop

As winter temperatures continue to drop across the country, there is no better way to start the day than with a warm cup of coffee in a cosy and welcoming environment.

...Fresh blooms & delicious bites

Vickery Coffee Shop is making winter mornings easier and more enjoyable by offering customers the perfect place to relax, recharge and enjoy freshly prepared coffee and delicious treats before taking on the day.

Whether you are heading to work, meeting friends, catching up on business, or simply looking for a peaceful morning escape, Vickery Coffee Shop provides the comfort and warmth every coffee lover needs this season.

Known for its inviting atmosphere and quality service, the coffee shop continues to attract customers looking for a convenient and refreshing way to beat the winter chill while enjoying their favourite beverages.

From rich aromatic coffee to light meals and tasty snacks, Vickery Coffee Shop has become a favourite stop for many seeking comfort, conversation and a productive start to the morning.

This winter, make your mornings easier, warmer, and more enjoyable with a visit to Vickery Coffee Shop; where every cup is served with warmth and care.



COME STAY WITH US

In our quiet picturesque garden setting, complete with lapa and braai area. We provide accommodation with warm and friendly hospitality within a traditional and homely atmosphere where you and your children will be made to feel exceptionally welcome by lodge owners Norma Robberts and Antonet Reid.

WE OFFER THE FOLLOWING:

- Very reasonable tariffs
- Breakfast and dinner on request and optional
- Suitable for all stop-overs, tourists reps and semi-permanent guests
- 34 double and 8 single en-suite rooms
- 7 Self catering units complete with flat screen DSTv, aircon and patio and braai stand
- Open fire boma braai area
- Conference hall (250 people)
- Wedding venue, and beautiful garden for wedding pictures
- Bird watching
- Swimming pool

Tel: +268 2207 9099/ Fax: +268 220 79099
Reception Call: +268 78306775
Email: phumulaguesthouse@swazi.net



FARM GUEST HOUSE

www.phumulaguesthouse.com

Wholesome Gourmet Grub At Vickerys



CONTACT: 7867 7696
VICKERY'S COFFEE SHOP & RESTAURANT
Vickery Seedlings, Main Road, Malkerns, Swaziland, M204

World Environment Day 2026: Climate Action

EVERY year on 5 June, the world marks World Environment Day. This year, the Eswatini Environment Authority (EEA), together with the European Union and development partners, commemorates the day under the theme: Climate Action through Restoring Rangelands and Reviving Biodiversity for a Sustainable Future — a theme that reflects the urgent environmental reality facing our country.

THE CRISIS ON OUR DOORSTEP

Three crises are deepening across Eswatini, each accelerated by climate change. Dongas, deep erosion gullies are swallowing farmland and silting rivers in every region, driven by land degradation and intensifying rainfall. Poorly managed waste continues to choke waterways, degrade ecosystems, and threaten public health; plastic pollution alone is causing irreversible damage to our rivers and biodiversity. And the quiet loss of indigenous species and natural habitats is stripping our landscapes of the very resilience we need to withstand climate shocks. These are not future threats, they are happening now.

APPLAUDING THOSE ALREADY ACTING

The Eswatini Environment Fund (EEF) has been central to this progress channelling support to communities, schools, and organisations doing the daily work of environmental protection. The EEA applauds the EEF's work and calls on the private sector and partners to strengthen the Fund, because investing in communities is investing in climate resilience. NGOs and civil society organisations continue to bridge the gap between policy and people, delivering education and supporting restoration on the ground. Schools are raising a generation of environmental stewards, showing that the habits of conservation start young.

THE CALL TO ACTION

Protecting our environment is everyone's responsibility. We call on government, traditional leaders, businesses, and civil society to mainstream environmental stewardship into every decision. And we call on every Swazi household to act: stop illegal dumping, plant indigenous trees, prevent veld fires, reduce plastic use, and support sustainable land management. Collectively, these actions can and do make a difference.

Our environment is our shared responsibility. The time for action is now. Umhlaba Uyimphilo Yetfu — Asiwonge!



...our environment is our shared responsibility. The time for climate action is now



Earth day tree planting at Enhlanhleni Primary School.







WORLD ENVIRONMENT DAY 2026

5 June, 2026

**INSPIRED BY NATURE.
FOR CLIMATE.
FOR OUR FUTURE**



UN
environment programme

P. O. Box 2602 Mbabane, Eswatini Tel: +268 2404 6960/ 7893 Rhus Office Park, Karl Grant Street

www.eea.org.sz

NKONYENI WINTER WARMTH:

Eswatini's Premier
Golf Course



WHILE most of Southern Africa braces for the biting, frost-laden winds of June and July, a completely different microclimate unfolds near Sidvokodvo. Tucked neatly along the banks of the Great Usutu River in the Kingdom of Eswatini, Nkonyeni Residential Golf Estate offers a distinct, temperate escape from the region's harsh winter chills.

Winter at Nkonyeni is less an icy season and more a golden era of outdoor perfection. Thanks to its low-lying bushveld valley geography, the estate enjoys mild, sunny winter afternoons averaging a comfortable 23°C. The humidity of the summer months gives way to a crisp, clear atmosphere—making it arguably the finest season of the year to experience the property's crown jewels.

The Nkonyeni Edge: The estate features a unique, innovative golf cart bushveld tour—the first of its kind in Southern Africa—blending a world-class sports retreat with a wild safari.

Golf and Game in Perfect Harmony
Nkonyeni's true uniqueness within Southern

Africa lies in its seamless blend of 27 holes of championship golf (including the iconic 18-hole course designed by Phil Jacobs) and an active 200-hectare game reserve. During the dry winter season, the indigenous bushveld thins out, offering golfers and visitors unpar-

alleled visibility. It is a common winter magic to line up a drive on pristine fairways while nyalas, impalas, kudus, and waterbucks graze quietly just a few meters into the rough.

Winter Experience	What Makes It Unique
The Climate	Mild, frost-free valley days ideal for escaping the highveld cold.
The Wildlife	Increased visibility around the Great Usutu River as the bush thins.
The Golf	Pristine, championship fairways backdropped by golden mountains.

When the sun dips behind the mountains, the crisp evening air sets the perfect stage for open-air braais, premium dining at the clubhouse restaurant, or unwinding at the luxury health spa. Nkonyeni in winter isn't just a getaway; it's a warm, wild, and sophisticated sanctuary found nowhere else in the region.

To Book Call: (00268)78024736 or email: info@nkonyenilodge.com
www.nkonyeni.co.za

winter escape

light: from R2999, 2ppl sharing, b&b
stay 3 nights and receive 20% off

book your
winter Escape
today!

Call: (268) 78024736 | info@nkonyenilodge.com
www.nkonyeni.co.za

NKONYENI
LODGE AND GOLF ESTATE

Malolotja is Eswatini's wilderness sanctuary



THERE is a place where the air smells of wild mountain herbs, where the horizon is jagged with peaks billions of years old and where your morning alarm is the call of the rare southern bald ibis. Just a short 40-minute drive north of Mbabane along the Pigg's Peak Road lies the Malolotja Nature Reserve with 18,000 hectares of high-altitude paradise that stands as one of Southern Africa's best-kept secrets.

For thrill-seekers and families alike, Malolotja isn't just a destination it's an invitation to step off the grid and plunge into the extraordinary.

THE HIKE TO THE POTHOLES

If you only have a day to explore, the trail down to the Malolotja River potholes is an absolute must. Over millennia, the relentless, swirling force of the river has carved deep, cylindrical pools out of the ancient quartzite rock, creating a dramatic, subterranean playground of polished stone and rushing water.

The journey down into the valley takes you through rolling montane grasslands, home to herds of blesbok, zebra and eland (the world's largest antelope). Enjoy a packed picnic and listen to the water echoing off the canyon walls before tackling the heart-pumping climb back up.

A BIRD'S-EYE VIEW

For those who prefer their views with a side of pure adrenaline, the reserve offers a world-class treetop adventure. Deep within the forested depths of the Sihlotswane Gorge, the Malolotja Canopy Tour lets you experience the mountain kingdom from an eagle's



perspective.

The course features 10 thrilling zip-line slides and a 50-meter-long suspension bridge slung high above the Majolomba River. Safety is built to the highest civil engineering standards, meaning you can focus entirely on the rush of gliding from platform to platform.

Suspended high above the forest canopy, you will glide past towering cliff faces and

ancient rock formations. Keep your eyes peeled and your camera secured; this mist-belt forest canopy is a haven for vibrant birdlife, including brilliant green Narina trogon and Lourie.

Unwind and Sleep Safe Under the Stars

You don't have to conquer a gruelling multi-day trail to experience the magic of a night out here. For families and casual weekend campers, Malolotja provides a beautifully maintained, secure and safe main campsite tucked quietly into the rocky outcrops near the park entrance.

Because Malolotja is a protected highland sanctuary, there are no large, dangerous predators like lions or elephants roaming the

OUTDOOR ADVENTURE

Exploring the Beauty of Eswatini

<p style="text-align: center;">ROOM PER NIGHT E900 Self Catering (For 2 People) E 450.00 additional for an extra Person T's & C's Apply Booking Essential Valid until 30 June 2026</p> <p style="text-align: center;">Call/WhatsApp: 7806 9261</p>	<p style="text-align: center;">ROOM PER NIGHT E600 Self Catering Room Amenities Air-conditioner DCS & Smart TV Refrigerator & Bath Heater Tea & Coffee Station Bread Maker Facilities & Activities Accommodation Hiking Bird Watching and Game Viewing Booking Essential Valid until 30 June 2026</p> <p style="text-align: center;">Call/WhatsApp: 7806 9261</p>	<p style="text-align: center;">ROOM PER NIGHT E700 B&B Facilities & Activities Restaurant & Bar Cultural Tour Waterfall Viewing Hiking T's & C's Apply Booking Essential Valid until 30 June 2026</p> <p style="text-align: center;">Call/WhatsApp: 7806 8932</p>	<p style="text-align: center;">ROOM PER NIGHT E980 B&B (Incl. Morning Feast, Alcohol, WI-FI & Smart TV) E750 B&B (Incl. Morning Feast, WI-FI & Smart TV) T's & C's Apply Booking Essential Valid until 30 June 2026</p> <p style="text-align: center;">Call/WhatsApp: 7806 8931</p>
--	---	---	--

ultimate



reserve. This means you can truly relax, letting the kids play and explore the open grasslands with total peace of mind.

Each of the 15 campsites features private braai (barbecue) facilities, access to a clean, modern ablution block with hot water, and a central communal fire area perfect for swapping stories under the Milky Way. Surrounded by grazing herds of harmless plains game, it's a peaceful, safe environment where the only distraction is the crackle of your campfire.

Whether you're looking to push your physical limits with a hike to the potholes, fly through the forest canopy or simply sit by a campfire with your family in a safe, tranquil paradise. Malolotja is ready to welcome you.

Book your next adventure today with the Eswatini National Trust Commission.

Call: +268 7086 8934



OUTDOOR ADVENTURE

Exploring the Beauty of Eswatini



Cyclists Ready for B2B Challenge



More than a race, the B2B Cycle Tour is a journey of fitness, tourism and unity across the Kingdom

CYCLING enthusiasts are gearing up for one of the country's most anticipated sporting and tourism events — the annual Border2Border (B2B) Cycle Tour — set to roll out on 15 June 2026.

Sponsored by AlphSZ to the tune of E100,000, the ALSZ B2B Cycle Tour will see cyclists from across Eswatini and neighbouring countries take on distances of 240km, 200km, 180km, 130km and 100km, along the scenic route stretching from Ngwenya Border Post to Lavumisa.

Unlike conventional cycling races, the B2B Cycle Tour is not a timed competition. Instead, the event focuses on promoting tourism, fitness, road safety and unity through a memorable journey across the Kingdom on two wheels.

The Tour has become a standout fixture on the Eswatini Cycling Association calendar, celebrated for fostering camaraderie among cyclists while showcasing the country's breathtaking landscapes and vibrant communities.

Cyclists will depart from various points throughout the day, with scheduled start times as follows:

- Ngwenya Border Post — 5am



- Mbabane Coronation Park — 5:45am
- Jubilee Park — 5:30am
- Sikhuphe (KM111) — 6:30am
- Lukhula — 7am

All routes will culminate in Lavumisa, where cyclists, supporters and fans will gather to celebrate the completion of

the Tour.

In keeping with the event's spirit of giving back, the day will conclude with the handover of donations to three care points in Lavumisa, courtesy of participating cyclists and organisers.

Members of the public are encouraged

to be part of the experience — whether as cyclists, supporters or spectators — as the Border2Border Cycle Tour once again brings together sport, tourism and community impact in a unique celebration of endurance and unity.

OUTDOOR ADVENTURE

Exploring the Beauty of Eswatini

ZIPLINING
SIBEBE RESORT

Experience the thrill of Ziplining.
Call 7804 9560

WATER SLIDES
SIBEBE RESORT

A lil' more of summer time
splish splash!
Kids and adults.
Call 7804 9560

CULTURE
SIBEBE RESORT

Experience the Soul of Eswatini - Where Culture, Nature and Adventure Unite!
Call 7804 9560

Nolu Events & Tours

Discover Eswatini's beauty and culture with Nolu Events & Tours

Our Services

- Cultural & Heritage Tours
- Adventure & Scenic Excursions
- Transfers & Tailor-made Packages
- Events & Group Experiences
- Safari Packages

Contact:
+268 78603019
@nolutours

Redefine Your Weekend

At Mdzimba View Shisanyama



- INCLUDES:**
- SWIMMING POOL
 - SECURE FACILITY
 - FREE WIFI

Luxury
ACCOMODATION

E500 PER NIGHT

WITHOUT BREAKFAST

E660 PER NIGHT

INCLUDING BREAKFAST

FIND US: Ezulwini, Satellite next to Satellite Clinic
FOR BOOKING & ENQUIRIES: +268 7841 2930

WHEN the weekend arrives, Mdzimba Shisanyama transforms into one of Eswatini's most vibrant entertainment destinations, offering an exciting blend of great food, refreshing drinks and unforgettable music experiences. Situated in the heart of Ezulwini, the venue has become a favourite gathering place for music lovers who appreciate quality entertainment in a lively and welcoming atmosphere.

Thursdays: Ladies Night. Gather your girlfriends for a sophisticated, smart casual evening. You'll enjoy complimentary wine, engaging games and an atmosphere designed for pure glam and connection.

MDZIMBA VIEW SHISANYAMA WEEKENDS POWERED BY RESIDENT DJs

A key ingredient behind the venue's growing popularity is its talented team of resident DJs. Week after week, these DJs create the perfect soundtrack for patrons looking to unwind, celebrate, and enjoy the weekend. From soulful house and amapiano to afro-tech, deep house, and commercial hits, the resident selectors ensure there is something for every music enthusiast.

Mdzimba View Shisanyama has built a repu-

tation for hosting memorable events featuring both local and regional talent. While headline acts often draw large crowds, the resident DJs remain the backbone of the venue's entertainment offering, maintaining the energy throughout the day and night and creating a unique musical identity for the establishment.

The weekend programme regularly attracts diverse audiences, including young professionals, tourists, families and nightlife enthusiasts. Guests can enjoy mouth-watering shisanyama meals while experiencing carefully curated music sets that keep the atmosphere vibrant from afternoon until late evening.

Beyond entertainment, Mdzimba Shisanyama continues to contribute to the growth of Eswatini's music and hospitality industries by providing a platform for DJs and artists to

showcase their talent. The venue has become a meeting point where music, culture, and community come together, creating memorable experiences for all who attend.

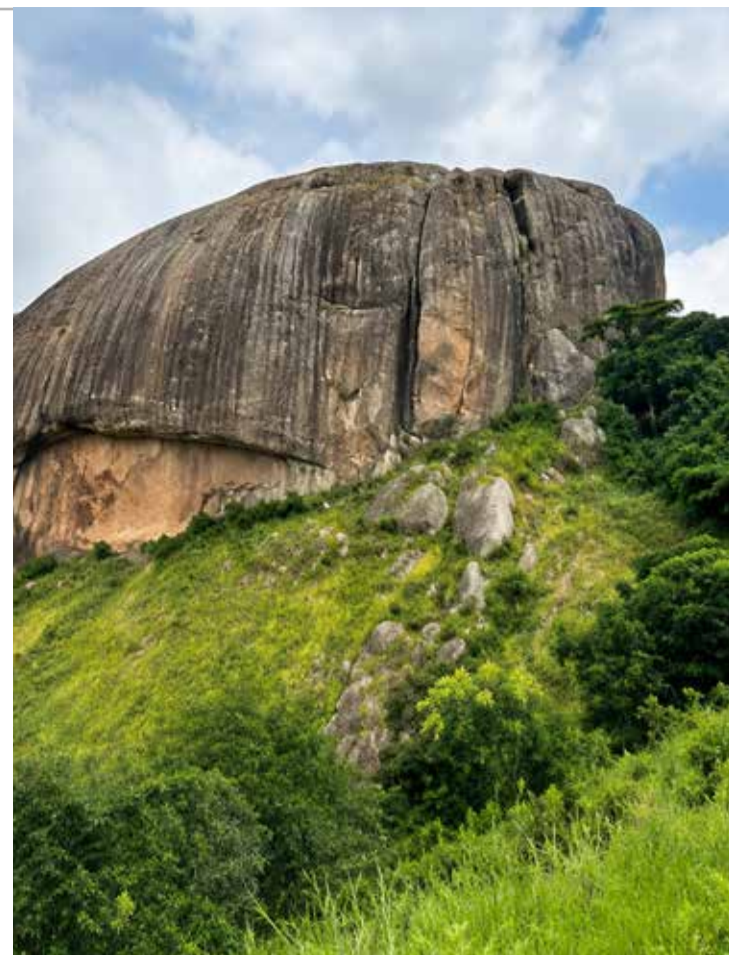
As the entertainment scene in Eswatini continues to evolve, Mdzimba Shisanyama remains committed to delivering premium weekend experiences through its resident DJs, special guest performances, and signature hospitality. For those seeking great music, delicious food, and an energetic atmosphere, Mdzimba Shisanyama continues to be one of the kingdom's premier weekend destinations.

WHAT'S HAPPENING
Eswatini

to advertise with us contact



+268 79603910 | whatshappening@times.co.sz | whats happening eswatini



Ezulwini Valley, Lobamba, Malkerns



NHSe walk Sunday 7 June. Mahebehla River

A New Walk for NHSe – Short, Sweet, and Scenic!

Join us for a fresh, easy walk close to home (Mbabane)! Nestled between Mbuluzi and Woodlands, this 5km stroll packs in stunning views, a touch of adventure, and a healthy dose of fresh air.

We'll drive along the Mahebehla River—one of the Mbuluzi River's tributaries—until we reach a breathtaking granite wall (and its slightly humbler sidekick). The walk is short but rewarding, with a powerful encounter of ancient rock and riverbed.

THE FINE PRINT:

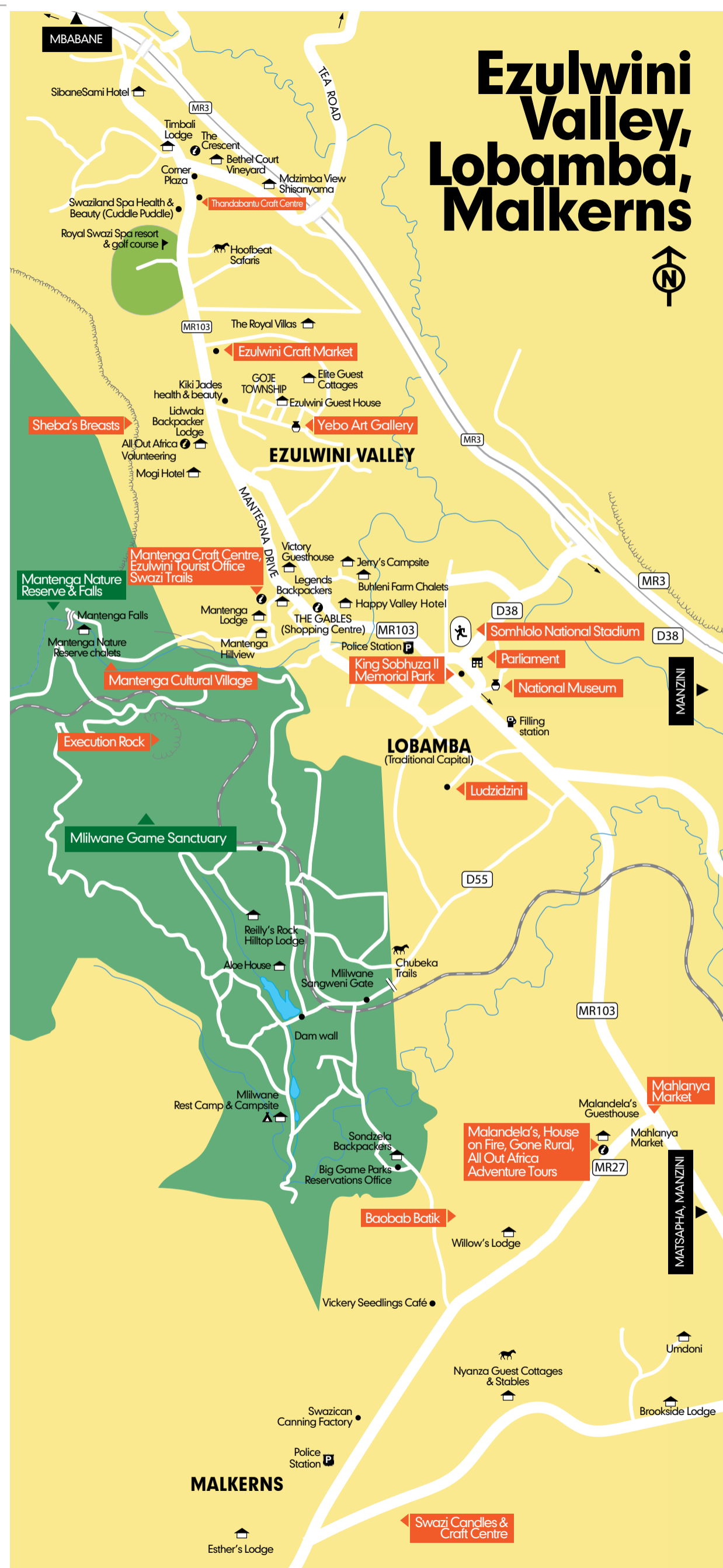
- Dogs are welcome (on a leash—we'll pass a few homesteads).
- Expect some high grass.
- Essentials: shoes, hats, water, sunscreen, a light snack, kids, dogs (optional but encouraged).
- Hiking poles are recommended.

MEETING POINTS:

- 7:30 AM – Theatre Club for prompt departure at 7.45
- 8:00 AM – Mbuluzi High School (end of the Pine Valley tar road)

...just 3km from the everyday rush, discover granite cliffs, river trails, fresh mountain air, and breathtaking Mbabane views — an easy community walk where nature, adventure, kids, and dogs are all welcome.

All welcome. There will be a guest fee of E40 for non-members which will be used for conservation or environmental projects. **Any questions to Yael What's App 7612 8310**



GENERAL INFORMATION

**TODAY'S BANKNOTES IN ESWATINI:
PRINTER: GIESECKE & DEVRIENT-GERMANY**



10 EMALANGENI (US\$0.54)



20 EMALANGENI (US\$1.07)



50 EMALANGENI (US\$2.69)



100 EMALANGENI (US\$5.37)



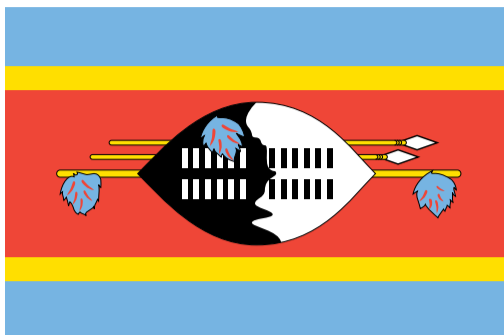
200 EMALANGENI (US\$10.75)

OUR COINS



The New Eswatini Coins currently in circulation.

THE ESWATINI FLAG



PANTONE 542 C
Process: C = 51, M = 16
Y = 0, K = 0

PANTONE 803 C
Process: C = 0, M = 9
Y = 100, K = 0

WHITE
Process: C = 0, M = 0
Y = 0, K = 100

PANTONE 157 C
Process: C = 0, M = 88
Y = 85, K = 0

The flag is rectangular, and its colors are red, blue and yellow. Each of these colors has a meaning:

RED: Stands for the battles of the past.

BLUE: Stands for peace and stability.

YELLOW: Stands for the resources.

The flag also has a picture of a shield and spear. These two symbols stand for protection of our country from enemies. The shield is black and white to show that black and white people live together peacefully in eSwatini.

THE SISWATI CALENDAR

- January** – Bhimbidwane (everybody satisfied)
- February** – Indlovana (little elephant)
- March** – Indlovulenkulu (big elephant)
- April** – Mabasa (kubasa-to make fire)
- May** – Inkhwekhwele (pick up everything you have)
- June** – Inhlaba (Aloe blossoms)
- July** – Kholwane (Hawk that nests in the moon)
- August** – Ingci (small wolf breeds in this month)
- September** – Inyoni (special bird mates)
- October** – Imphala (Antelope bears its young)
- November** – Lweti (star to see when women begin work early also Inkhosi lencane (little chief)
- December** – Ingongoni/ Mavulangamithi (Buffaloe month/ to swallow pickings of teeth) also Inkhosi Lenkhulu (big chief)

BORDER HOURS



- Mhlumeni/ Goba Border** Open 24hrs
- Lomasha/ Namaacha** ... Open 07:00hrs – 22:00hrs
- Ngwenya/ Oshoek Border** Open 24:00hrs
- Lavumisa/ Golela Border** .. Open 07:00hrs – 22:00hrs
- Mahamba Border** Open 07:00hrs – 22:00hrs
- Mananga Border** Open 08:00hrs – 18:00hrs
- Matsamo/ Jeppe's Reef** Open 08:00hrs – 20:00hrs
- Nsalitshe/ Onverwacht**..... Open 08:00hrs – 18:00hrs
- Sandlane/ Nerston**..... Open 08:00hrs – 18:00hrs
- Sichunusa/ Houdkop**..... Open 08:00hrs – 18:00hrs

LOCATION

Southern Africa, between Mozambique and South Africa Geographic coordinates:

- Size:** 26 30 S, 31 30 E
17 364sq km
Countries border 535 km
- Total:** 535 km
- Border countries:**
 - Mozambique 105 km,
 - South Africa 430 km
- Lowerst point:** Great Usutu River 21m
- Highest point:** Emlembe 1 862 m

TRANSPORT BETWEEN ESWATINI & SA

GETTING to eSwatini apart from traveling by coach with a group is very easy. Busses operate daily between **Johannesburg (Sandton and O. R. International Airports)** as well as daily flights:

BY AIR:
Airlink eSwatini | Tel. +268 251 86155
swaziairlink@flyairlink.com
www.flyEswatini.com

YOUR EMBASSY/CONSULATE IN SD

- Cyprus Consulate: 2404 2650 / 2404 1138
- Danish-Norwigean Consulate: 2404 3547
- Honorary Consul of Finland: 7914 6951/7902 5270
- French Consulate: 2404 3667
- German Liason Off: 2404 3174
- High Commission of India 2417 1413
- Italian Consulate: 2404 4371
- Mozambique: 2404 3700
- Portugal Consulate: 2404 6780
- Republic of China (Taiwan); 2404 4740/1
- Seychelles Con: 2505 2415
- Singapore High Commission: 2404 2661/2/3
- South Africa: 2404 4651
- Turkish Consulate: 2422 0805
- USA: 24179000

MEDICAL HELP TEL: 7606 0911

- Mkhiwa Clinic**, Manzini private Hospital, 24h casualty & emergency, Tel: 2505 9299 or 2505 9293
- The Manzini Clinic** Tel: 2505 7430
- Medisun Clinic**, Ezulwini Tel: 2416 2800
- The Mbabane Clinic** 24th Trauma Care and Laboratory Service Tel: 2404 2423
- Dentist:** Mbabane Clinic Tel: 2404 2423
- Good Shepherd Hospital**, Siteki Tel: 2343 4133

ROAD DISTANCES TO ESWATINI (MBABANE) IN KILOMETERS:

- Johannesburg (South Africa) 635
- Durban (South Africa) 635
- Richards Bay (South Africa) 635
- Gaborone (Botswana) 748
- Maputo (Mocambique) 236
- Maseru (Lesotho) 306

BUSINESS HOURS & PUBLIC HOLIDAYS:

OFFICE and shop hours are usually 08h00-13h00 and 14h00-17h00 Mondays to Fridays. Bank hours are 08h30-14h30 Mondays to Fridays, 08h30-11h00 on Saturdays.

Post offices are open 08h00-16h00 Mondays to Friday and 08h00-11h00 on Saturdays.

- New Year's Day** – 1 January
- King's Birthday** – 19 April
- National Flag Day** – 25 April
- Worker's Day** – 1 May
- Umlhanga Reed Dance Day** – (end of August or early September)
- Somhlolo Independence) day** – 6 September
- Christmas Day** – 25 December
- Boxing Day** – 26 December
- December Incwala Day** – (December or early January)

SOME SISWATI WORDS:

- | | |
|--------------------|---|
| Sawubona | Hello |
| Unjani | How are you |
| Ngiyaphila | I am fine |
| Ngiyabonga | Thank you |
| Wota lapha | Come here |
| Sikhulekile ekhaya | A Swati way of greeting a home as well as asking for permission to enter. |
| Sala kahle | Stay well |
| Hamba kahle | Go well |



GENERAL INFORMATION

ADVENTURE

All Out Adventure Tours, Malkerns
Tel: 2528 3423

Canopy Tours at Malolotja Nature Reserve,
Tel: 2444 3241

Sibebe Rock:
Cell: 7670 1667

White Water Rafting, Swazi Trails, Ezulwini
Tel: 2416 2180

Paintball, Hoof Beat
Cell: 76117655

Paintballing, Khuselwa,
Cell: +268 7803 8838

Quad Bikes, Khuselwa Farm,
Cell: +268 7803 8838

ART GALLERIES

Yebo Art Gallery, Zulwini
Cell: +268 7914 651

BACKPACKERS

Legends Backpackers, Mantenga
Tel: 2416 1870

Lidwala Lodge, Ezulwini
Tel: 7690 5865

Mlawula Nature Reserve, north of Simunye
Tel: 2383 8885

Sondzela Backpackers, Malkerns (Big Game Parks)
Tel : +268 2528 1000/1 Cel : 7677 6772

BEAUTY & HEALTH

Maguga Lodge, Maguga Dam
Tel: 2437 3975

Nkonyeni Golf Estate Spa
Cell: 7602 7749

The George Hotel: Manzini
Tel +2505 2260

ACCOMODATION

Big Game Parks,
Tel : +268 2528 1000/1 Cell : 7677 6772

Brookside Lodge, Malkerns
Tel: 2528 3765/ Cell: +268 76214228

Lebombo Villas, Big Bend
Tel: 7603 6585

Malandelas, Malkerns
Tel: 2528 3448

Mdzimba View Lodge,
Cell: 7841 2930

Phumula Guest House, Nhlanguano
Tel: 2207 9099

Simunye Club, Simunye
Tel: 2328 8894

Matsapha Inn,
Cell: +268 7860 0820

Tree Tops Resort,
Cell: +268 7808 0801

Email: treetops@madlamini.co.sz

BIRD WATCHING

Buhleni Farm Chalets
Tel +268 2416 3505/8

Foresters Arms, Mhlambanyatsi
Tel: 2467 4177

Simunye (Big Game Parks)
Tel : +268 2528 1000/1 Cell : 7677 6772

KaMsholo Bushveld Safaris, South of Big Bend
(Big Game Parks)

**Tel: +268 2528 1000/1
Cell: 7677 6772**

Mananga Country Lodge
Tel 2323 2404

Malolotja Nature Reserve,
Tel 2444 3241

Mkhaya Game Reserve, Phuzamoya (Big
Game Parks)
Tel: +268 2528 1000/1 Cell: 7677 6772

Mlawula Nature Reserve, north of Simunye
Tel: 2383 8885

Mlilwane Game Sanctuary, Malkerns (Big
Game Parks)

**Tel: +268 2528 1000/1
Cell: 7677 6772**

Nkonyeni Golf Estate
Tel: 2540 0024/5

Phumula Guest House, Nhlanguano
Tel: 2207 9099

Shield Guesthouse
Tel: 2404 6072/ 7652 4021

Mhlosinga Nature Reserve
Tel: +268 76300526

Royal Jozini
+268 2550 4614/ +268 7680 7047

BUSHMAN PAINTING

Nsangwini Rock Shelter
Tel: 7619 2665

Hhelehele Rock Art:

CAMPING

Buhleni Farm Chalets

Tel: +268 2416 3505/8

Brookside Lodge, Malkerns
Tel: 2528 3765/ Cell: +268 76214228

All OUT Adventure Tours, Malkerns
Tel: 2528 3423

Shewula Mountain camp and nature reserve:
Tel: 2343 4524/

Cell 7605 1160/7603 1931

Mhlosinga Nature Reserve
Tel: +268 76300526

CARAVAN SITES

Buhleni Farm Chalets
Tel +268 2416 3505/8

Hlane Royal National Park
Tel : +268 2528 1000/1 Cell : 7677 6772

KaMsholo Bushveld Safaris,
South of Big Bend (Big Game Parks)
Tel : +268 2528 1000/1 Cell : 7677 6772

CAVING

Swazi Trails
Tel: 2416 2180

CRAFTS & ARTS

LaJojo's Craft, Malolotja
Cell: +268 7657 8791

Gone Rural, Malkerns
Tel: 2550 4936/ 7615 2736

Kwaziswazi, Malkerns
Tel: 2528 3110

Ngwenya Glass,
Tel: 2442 4053

Rainbow Angels
Tel: 24162508

Swazi Candles, Malkerns
Tel: 2528 3219

CULTURE

King Sobhuza II Memorial Park, ENTC
Lobamba **Tel: 2416 2131**

Maguga Lodge **Tel: 2437 3975**

Mantenga Cultural Village **Tel: 2416 1151**

Sibebe Resort, **Cell: +268 7804 9560**

Shewula Mountain camp and nature reserve:
Tel: 2343 4524/ Cell 7605 1160/ 7603 1931

FISHING

Royal Jozini
+268 2550 4614/ +268 7680 7047

Foresters Arms, Mhlambanyatsi
Tel: 2467 4177

Guided Fishing Tours Tiger
Fishing at van Eck Dam
+268 7602 5482

Maguga Dam
Tel: 2437 3975

Mananga Country Lodge
Tel 2323 2404

Mhlosinga Nature Reserve
Tel: +268 76300526

GAME VIEWING

KaMsholo Bushveld Safaris, South of Big Bend
(Big Game Parks)
Tel: +268 2528 1000/1 |

Cell: 7677 6772

Mlawula Nature Reserve
Tel: +268 2383 8885

Mananga Country Lodge
Tel 2323 2404

Malolotja Nature Reserve
Tel: 2444 3241 or 7660 6755

Mkhaya Game Reserve, Phuzamoya (Big
Game Parks)

Tel: +268 2528 1000/1 | Cell: 7677 6772

Mlilwane Game Sanctuary, Malkerns (Big
Game Parks)

Tel: +268 2528 1000/1 | Cell: 7677 6772

Shewula Mountain camp and nature reserve:
Tel: 2343 4524/ Cell 7605 1160/ 7603 1931

Brookside Lodge, Malkerns
Tel: 2528 3765/ Cell: +268 76214228

Foresters Arms, Mhlambanyatsi
Tel: 2467 4177

Nkonyeni Golf Estate
Tel: 2540 0024/5

Mananga Country Lodge
Tel 2323 2404

Simunye Country Club
Tel: 2383 8894

Mhlosinga Nature Reserve
Tel: +268 76300526

Matsapha
Tel: 2518 4693

Royal Jozini
+268 2550 4614/ +268 7680 7047

HORSE RIDING

Chubeka Trails, at Mlilwane Game Sanctuary
Tel : +268 2528 1000/1 | Cell : 7677 6772

Foresters Arms, Mhlambanyatsi
Tel: 2467 4177

Hoof beat, Horse riding, Paintball
Cell: 76117655.

Khuselwa, Manzini
Cell: +268 7803 8838

HOTELS

Maguga Lodge, Maguga Dam
Tel: 2437 3975

Nkonyeni Golf Estate | Tel: 2540 0024/5
Phumula Guest House, Nhlanguano

Tel: 2207 9099

The George Hotel: Manzini
Tel +2505 2260

LODGES

Brookside Lodge, Malkerns
Tel: 2528 3765/ Cell: +268 76214228

Buhleni Farm Chalets
Tel 2416 3505/8 Te: 2404 3387/ 7608 6229

Maguga Lodge, Maguga Dam
Tel: 2437 3975

Mahamba Gorge Lodge
Cell 7617 9880

Mantenga Cultural Village,
Tel: 2416 1101/2416 1151

Mananga Country Lodge
Tel 2323 2404

Manzini Lodge
Tel: 2505 5382

Mbuluzi Nature Reserve North of Simunye
Tel: 2383 8861/2

Mhlume Country club & lodge:
Tel 2313 4350/ 2313 4777

Shield Guesthouse
Tel: 2404 6072/ 7652 4021

Sibebe resort
Tel: 3402 0406/76088228

Royal Jozini +268 2550 4614
+268 7680 7047

MUSEUMS

Bulembu Museum |www.bulembu.org
www.sntc.org.sz

King Sobhuza II Memorial Park
www.sntc.org.sz

Mantenga Cultural Village |www.sntc.org.sz
Sugarcane Museum | +268 23737334 /
www.sugarcanemuseum.com

RESTAURANTS

Velvet Monkey, Zulwini,
Cell: +268 7663 4822

Esphino, Siteki,
Cell: +268 7876 0543

Email info.esphino@swazi.net
Mdzimba View Shisanyama, Zulwini,
Cell: 7841 2930

email: mdzimbaview@gmail.com
Forester's Arms, Mhlambanyatsi
Tel: 2467 4177

Sambane, Malkerns
Tel: 2528 3466

Simunye Country Club, Simunye,
Tel: 2383 8894

The Calabash: Ezulwini
Tel 2416 1187

The George Hotel: Manzini
Tel +2505 2260/ 7860 2020

Matsapha
Tel: 2518 4693

SELF-CATERING

Big Game Parks,
Tel : +268 2528 1000/1 | Cel : 7677 6772

Buhleni Farm Chalets
Tel +268 2416 3505/8

Veki's, Mbabane | Tel: 7603 6396
Mhlosinga Nature Reserve Cabins

Tel: 268 7602 5482

Lakeside Tiger Fish Cabins
Tel: 268 7822 4905 ins@gmail.com

Royal Jozini +268 2550 4614
+268 7680 7047

TOURIST INFORMATION

All Out at Mandela's Internet Café, Malkerns,
Tel: 2528 3423

Dept. of Tourism, Swazi Plaza, Mbabane
Ezulwini Tel: 2416 2180

Swazi Trails
Tel: 2416 2180

TRAVEL AND TOURS

Nolu Events & Tours
Cell: +268 78603019

Wild Hogg Tours, Eddie
+268 76047510/79047510

WALKING/HIKING

Simunye (Big Game Parks):
+268 2528 1000/1 | +268 7677 6772

KaMsholo Bushveld Safaris, South of Big Bend
(Big Game Parks)

Tel : +268 2528 1000/1 | Cell : +7677 6772

Khelekhele Trail
Cell: 7631 5308

Maguga Lodge, Maguga Dam
Tel: 2437 3975

Maguga view point:
Tel:2437 1056/ Cell 7606 5519/7607 1175

Mahamba Gorge Lodge:
Cell 7617 9880

Malolotja Nature Reserve
Tel: 2444 3241 or 7660 6755

Mananga Country Lodge
Tel 2323 2404

Mkhaya Game Reserve, Phuzamoya (Big
Game Parks)
Tel: +268 2528 1000/1 | Cell: 7677 6772

Mlawula Nature Reserve,
Tel: 2383 8885

Mlilwane Game Sanctuary, Malkerns (Big
Game Parks)

Tel: +268 2528 1000/1 | Cell: 7677 6772

Nkonyeni Golf Estate
Tel: 2540 0024/5

Phumula Guest House, Nhlanguano
Tel: 2207 9099

Sibebe Rock
Cell: 7670 1667

Shewula Mountain camp and nature reserve:
Tel: 2343 4524/ Cell 7605 1160/ 7603 1931

Royal Jozini
+268 2550 4614/ +268 7680 7047

Elevated Evenings at Together & Co Pool Bar

GRACED by esteemed ministers, industry leaders and distinguished guests, the launch of Together & Co. Pool Bar is not only an exciting addition to Hilton Garden Inn Mbabane, but also a beautiful reflection of how Eswatini's hospitality industry continues to grow, inspire and create spaces where people come together to celebrate life.

This stylish poolside venue developed in response to guest feedback and the growing demand for modern lifestyle experiences within the hospitality sector is a destination for curated cocktails and elite networking, set against the backdrop of the stunning Mbabane skyline

Kick off your weekend with the new Together & Co Pool Bar

T & Co Pool Bar offers the perfect ultimate after-work chill; where luxury, flavour and breathtaking views come together perfect cocktails, great company. T & Co Pool Bar offers stunning views of the Mbabane skyline. Whether you are hosting, weddings or simply looking for the perfect spot to unwind, this vibrant space has it all. A place designed for unforgettable sunsets, curated cocktails, and meaningful conversations in an atmosphere of elegance and exclusivity.



Why Biodiversity Matters for Eswatini



1. WHY BIODIVERSITY MATTERS FOR ESWATINI TOURISM AND ECONOMIC GROWTH

Tourism remains one of Eswatini's strongest opportunities for economic growth. Visitors from across the world are attracted by:

- Wildlife reserves
- Scenic mountains and valleys
- Traditional Swazi culture
- Cultural festivals
- Eco-tourism experiences
- Handcrafted arts and crafts

Places such as Hlane Royal National Park, Mlilwane Wildlife Sanctuary, and Malolotja Nature Reserve showcase the country's natural beauty and biodiversity.

If forests disappear, rivers become polluted, or wildlife populations decline, tourism will suffer. Protecting biodiversity therefore protects jobs, businesses and national income.

2. CULTURAL HERITAGE AND IDENTITY

Eswatini's culture is deeply connected to nature. Traditional ceremonies, indigenous knowledge, medicinal plants, sacred forests and agricultural practices all depend on healthy ecosystems.

Cultural events such as the Umhlanga Reed Dance and Incwala Ceremony reflect the close relationship between the people and the environment.

The preservation of reeds, forests, water sources and indigenous plants ensures that future generations can continue practicing these traditions with pride.



EVERY year on 22 May, the world commemorates the International Day for Biological Diversity, a global reminder that nature is the foundation of human survival, economic growth, culture and future prosperity. In 2026, the importance of biodiversity is more urgent than ever as countries face climate change, environmental degradation, deforestation, pollution and the loss of indigenous species.

For Eswatini, biodiversity is not only about protecting plants and animals. It is about preserving the soul of the nation; its landscapes, traditions, wildlife, water sources, cultural identity and tourism economy. Eswatini has a unique opportunity to become a leading example of sustainable environmental conservation while protecting its rich cultural heritage.

UNDERSTANDING BIODIVERSITY

Biodiversity refers to the variety of life

on Earth, including animals, plants, forests, rivers, insects, microorganisms, and ecosystems. Healthy biodiversity ensures clean air, fertile soil, food security, medicine, rainfall patterns, and climate stability. Eswatini is blessed with remarkable biodiversity despite being one of Africa's smaller nations. The country has:

- Rich mountain ecosystems
- Indigenous forests

- Wetlands and rivers
- Wildlife reserves
- Rare bird species
- Traditional medicinal plants
- Unique cultural landscapes

These natural resources support agriculture, tourism, livelihoods, and community life.



Events CALENDAR



Mark Your Calendar!

FROM outdoor adventures and community fundraising to fitness challenges, local markets, and innovative experiences, June promises something for everyone in Eswatini. Don't miss the opportunity to be part of these exciting events across the kingdom.

empowerment at the Spar Women's Challenge Eswatini. The event brings together women of all ages and fitness levels for a fun-filled day of running, walking, community engagement, and healthy living from 4.1km to 10 km

13 JUNE
BORDER TO BORDER CYCLE TOUR:

Cyclists from across the region come together for this exciting endurance ride, showcasing fitness, determination and the spirit of adventure. The ALSZ B2B Cycle Tour will see cyclists from across Eswatini and neighbouring countries take on distances of 240km, 200km, 180km, 130km and 100km, along the scenic route stretching from Ngwenya Border Post to Lavumisa

27 JUNE
MOMO XPERIENCE 3RD EDITION:

Eswatini's entertainment calendar is heating up as the highly anticipated MoMo Xperience 3rd Edition prepares to deliver one of the country's biggest lifestyle and music experiences this June. Set for 27 June 2026 at Malkerns Country Club, starting at 11am till late; this year the festival promises an unforgettable fusion of music, fashion, culture, food, lifestyle and nonstop entertainment and is set to start at 11am - 2am

14 JUNE
CHESHIRE HOMES MALLOTJA CHALLENGE WALK:

Join outdoor enthusiasts and supporters for a scenic walk through the beautiful Malolotja landscape in support of Cheshire Homes. A great opportunity to enjoy nature while contributing to a worthy cause. From 7KM to 14KM and Aerobics; contact 7659 7257 for more information

13 JUNE 2026
EZULWINI FARMER'S MARKET

Legends Shared, Mantenga
Discover fresh local produce, handmade crafts, delicious food, and unique products from Eswatini's farmers and entrepreneurs. Bring family and friends for a vibrant community market experience. Time: 9:00 AM - 3:00 PM

27 JUNE
SPAR WOMEN'S CHALLENGE ESWATINI:

Celebrate fitness, wellness, and women's

...June promises something for everyone in Eswatini. Don't miss the opportunity to be part of these exciting events across the kingdom



